



SMA60
For Doctors For Patients
Years

FINAL CALL

2020 SMA MEMBERSHIP

**Claim Your
Limited
Edition Gifts!**

Thank you for your support and membership as we continue advocating for doctors and patients in 2020. Be an SMA Member in good standing by 31 January 2020 and claim your limited edition* gifts!

You can now pay your 2020 SMA Membership fees via the following payment modes

- a) **PayPal:** Log in to your online membership portal at <https://www.sma.org.sg>
- b) **PayNow:** UEN No.: S61SS0168E
- c) **Bank transfer:** DBS Account No.: 001-063564-6 (Beneficiary name: Singapore Medical Association)

Regardless of your mode of payment, eligible SMA Members will be able to collect the limited edition* gifts from 17 February 2020 onwards.

Please indicate your SMA Account Number when making payment via PayNow and bank transfer, or update us with your transaction reference number so that we can trace your payment.

**SMA 4-in-1
Multi Pen**



**SMA
Charity Fund
"Sabrella"**

**While stocks last. Redeem by 30 April 2020. We regret that there will be no delivery of gifts. Redemption of gifts is to be done only at SMA office (2985 Jalan Bukit Merah, #02-2C SMF Building, Singapore 159457).*

2-FOR-1

SMA Spouse Membership

If you and your spouse are both medical doctors eligible for SMA Membership, only one of you need to pay membership fees as spouse membership is complimentary!

To apply for spouse membership#, convert your membership type or for more details, please visit <https://www.sma.org.sg/membership> or contact us at membership@sma.org.sg

A copy of your marriage certificate is required for verification.



Jointly organised by the SMA Centre for Medical Ethics and Professionalism (SMA CMEP) and College of Psychiatrists (CPSYCH), Academy of Medicine, Singapore (AMS)



SEMINAR ON PERSONS WITH INTELLECTUAL DISABILITIES

4 April 2020, Saturday • 1 pm to 5 pm
2 CME Points
(Pending Singapore Medical Council's approval)

Target audience: GPs, Paediatricians, Psychiatrists and Neurologists

COMPLIMENTARY FOR ALL HEALTHCARE PROFESSIONALS!

Objectives

This seminar enables clinicians to...

- Understand the unique and psychosocial issues surrounding Persons with Intellectual Disabilities (PWIDs) in Singapore
- Perform Mental Capacity Assessments and apply the Questionnaire Tool to gather appropriate information during the deputyship application process for PWIDs
- Fill out the appropriate court requirement forms and medical reports needed for deputyship application for PWIDs under the Mental Capacity Act
- Develop a comprehensive report that could assist in the future care of PWIDs by the court-appointed deputy and all other caregivers

Topics*

Introduction to PWIDs

Background of PWIDs

Overview of Mental Capacity Assessment for Doctors

Assessing Mental Capacity with the Assessment Tool

Panel Discussion – Questions and Answers

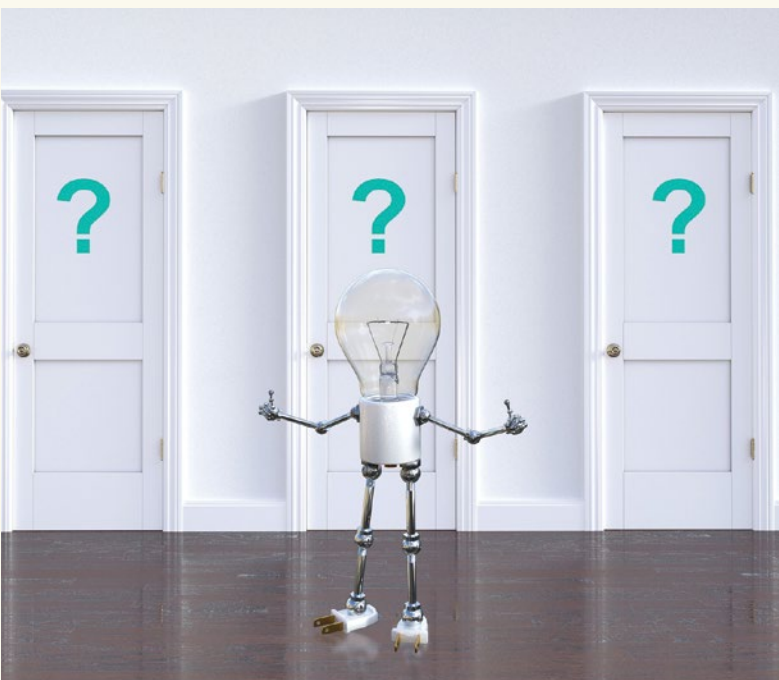
*Subject to minor changes

Speakers / Panellists

- Dr T Thirumoorthy, Academic Director, SMA CMEP; Associate Professor, Duke-NUS Medical School
- Dr Bhavani Sriram, Consultant Paediatrician and Neonatologist, Minds Developmental Disabilities Medical Clinic
- Dr Wei Ker-Chiah, Chief, Department of Community Psychiatry, Institute of Mental Health
- Dr Giles Tan, Senior Consultant, Department of Developmental Psychiatry, Institute of Mental Health
- A/Prof Ruby Lee, Associate Professor, National University of Singapore Faculty of Law

For more information or registration, please visit <https://www.smacmep.org.sg> or contact Jasmine Soo at 6223 1264 or cme@sma.org.sg.

UNDERSTANDING INDEMNITY AND HOW TO DEAL WITH DIFFICULT SITUATIONS



LEARN ABOUT THE DIFFERENT INDEMNITY SOLUTIONS AND FIND THE ONE THAT SUITS YOU AND YOUR PRACTICE!

07 MAR
2020
SATURDAY

1 pm to 5 pm
Holiday Inn Singapore Atrium

2 CME points
(subject to Singapore Medical Council's approval)

Take this opportunity to speak with all three indemnity providers and learn about the different products available. SMA's Indemnity Committee will also touch on how to deal with difficult situations.

- ▶ Understanding the Basics of Indemnity
- ▶ Product Sharing by Indemnity Partners
- ▶ What to Do When I Receive a Complaint?
- ▶ Handling Difficult Patients and/or Families



TAX OBLIGATIONS ON MEDICAL PRACTICE

28 MAR
2020
SATURDAY

1 pm to 5 pm
Holiday Inn Singapore Atrium

2 CME points
(subject to Singapore Medical Council's approval)

Tax season is upon us once again. Whether you love or hate it, you can't put off preparing and filing your tax return. Join us for an afternoon of insightful discussion with the Inland Revenue Authority of Singapore and RSM Singapore to help you navigate through this tax filing season.

- ▶ Tax Obligations
- ▶ Common Tax Errors
- ▶ Tax Planning
- ▶ Budget 2020



**Singapore
Medical
Association**

MPM seminars in 2020 not to be missed!
**Scan this QR code or
visit <http://bit.ly/2ZWG5qp> to register NOW**



Stressed over recruitment and training?

Last chance to enjoy the e2i funding for clinic assistants employed from 27 September 2018 onwards!



DID YOU KNOW?

SMA has a web portal with a pool of prospective clinic assistants

You can post job vacancies via your membership portal

You could send your staff for training with grants of up to 90%*

Log in to your membership portal to post your clinic's vacancies and interested job seekers with unique log-in access can view and submit their applications to you! A list of potential job seekers will also be sent to you after you've indicated details of your clinic vacancy via the online portal.

**If you have recruited a clinic assistant (Singaporean/Singapore Permanent Resident) after 27 September 2018 and are sending him/her to our Introductory Skills Training, you could enjoy a funding grant from Employment and Employability Institute's (e2i). The funding grant covers up to 90% of the Introductory Skills Training Fees (U.P.: \$800 before GST; capped at \$720) and up to 70% of your newly hired clinic assistant's one-month gross salary (capped at \$1,750 per trainee).*

Find out more via our website at <http://bit.ly/2Mjm6N1> or have a chat with us at clinicassistant@sma.org.sg!

SMA Clinic Assistant Place and Train Programme

Four-day Introductory Skills Course
19 to 22 February 2020

Three-week on-the-job training
24 February to 14 March 2020



Organised by



SMA 60 Years
For Doctors and Patients

Supported by

e2i
Better Jobs For Life
Employment and Employability Institute