

SMA Membership Fee Adjustment



We would like to inform SMA Members about the upcoming adjustment of the SMA Membership fees, with effect from 1 January 2024. This follows the passing of the constitutional amendment to increase the Ordinary Membership Fees from \$200 to \$250 (before GST) at the SMA Annual General Meeting on 30 April 2023. Members were informed on 4 May 2023 via email, and again in the May 2023 issue of *SMA News*.

We understand that any increase in fees might raise concerns. The Membership fees were last increased in 2007. Over the past 16 years, we have tried our best to continue serving the Membership at the same cost by generating additional income from other sources and adopting more cost-effective solutions. However, with the economy having undergone significant changes especially in recent years, we find ourselves in a position where we must make a necessary adjustment in order to continue serving the Membership effectively, ensure the continued viability of the Association and to better contribute to the medical profession as a whole.

We continue to serve Members through our advocacy work, continuing medical education (CME) activities, publications, social activities and sports events. In addition, from 1 January 2024, we will be providing means of acquiring the mandatory medical ethics (MME) CME core points at no cost to our Members. The increase in Membership fees will help to defray the administrative and infrastructure costs required to build and provide these means.

The new Membership fees with effect from 1 January 2024 are as per the announcement on the facing page.

We deeply appreciate your support for the SMA. Your Membership plays a vital role in shaping the future of healthcare and advancing our collective mission.

Thank you for your understanding. Please do not hesitate to contact us at membership@sma.org.sg if you have any questions or require further information.



Adjusted SMA Membership Fees

As per the constitutional amendment passed at the 2023 SMA Annual General Meeting, SMA's Ordinary Membership Fees will be increased from \$200 to \$250 (before GST). With effect from 1 January 2024, the new Membership Fees are as follows:

ORDINARY MEMBER	Year of Graduation	TOTAL AMOUNT (Including 9% GST)
1st year after graduation	2024	\$68.13
2nd year after graduation	2023	
3rd year after graduation	2022	\$136.25
4th year after graduation	2021	
5th year after graduation	2020	
6th year after graduation	2019	\$204.38
7th year after graduation	2018	
8th year onwards	2017 or before	\$272.50
OVERSEAS MEMBER		
Flat Rate	–	\$187.50
SPOUSE MEMBER		
Complimentary	–	\$0.00
STUDENT MEMBER		
Complimentary	–	\$0.00

For more information regarding our Membership fees and privileges, visit <https://www.sma.org.sg/member-privileges>. If you have any queries, please email membership@sma.org.sg.

UPDATE ON GERD

Gastroesophageal Reflux Disease

18 November 2023, Saturday

12.30 pm to 4.30 pm

Webinar via Zoom

2 CME points

- UPDATE ON DIAGNOSIS AND MEDICAL MANAGEMENT OF GERD
- UPDATE ON SURGICAL MANAGEMENT OF GERD
- DIETARY MANAGEMENT OF GERD

The prevalence of GERD used to be higher in the Western world as compared to in Asia. However, with the increased prevalence of obesity across Asia, the GERD incidence rate is rising in Asian countries including Singapore. GERD affects up to one in five people. It is also the digestive disease with the highest direct financial cost to the patient, ahead of colorectal cancer and liver disease. In this webinar, we will discuss updates on the diagnosis, as well as the medical, surgical and dietary management of GERD.

TO REGISTER

Contact Spencer at 6540 9196
or email cme@sma.org.sg



Sponsor:

AstraZeneca 





Fee waiver for Singapore Citizens applying via LPA Form 1 has been extended till 31 March 2026.

APPLY TO BE A LASTING POWER OF ATTORNEY CERTIFICATE ISSUER TODAY!

Help your patients plan for their future with an LPA, which will give them and their loved ones the peace of mind and reduce uncertainty. LPA certification can now be done simply and securely using Office of the Public Guardian Online (OPGO).

Visit the SMA CMEP website (<https://www.smacmep.org.sg>) and click on the banner.



Click on the "Get this course" button and register by filling in your particulars.

Once your account has been activated, you can proceed to complete the module! (You will receive 1 non-core CME point upon completion)



For enquiries, please email OPG_LPA@sma.org.sg

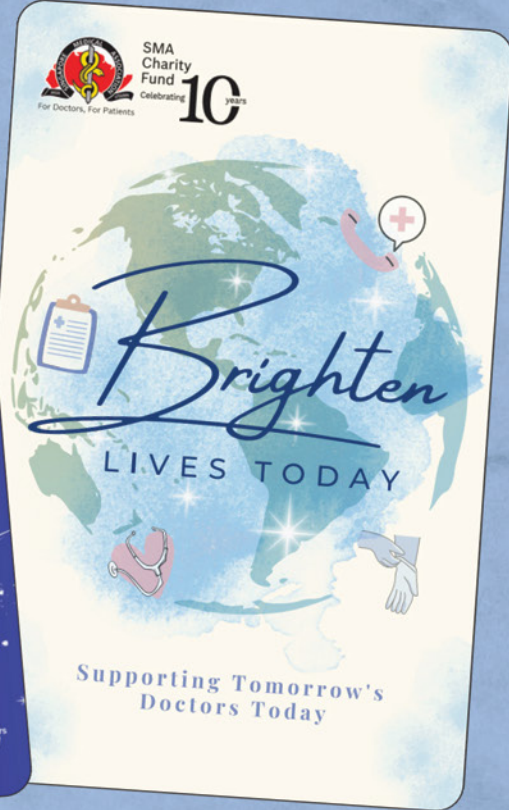


SMA
Charity
Fund
Celebrating **10** years

RECEIVE OUR EXCLUSIVE LIMITED EDITION 10TH ANNIVERSARY

EZ-LINK CARDS!

Donate \$150 or more to the SMA Charity Fund in support of underprivileged medical students to receive these EZ-Link cards today.



EZ-Link cards come with \$10 stored value

One card is all you need for your transportation.

Compatible with your public transportation needs and even ERP & parking charges!

