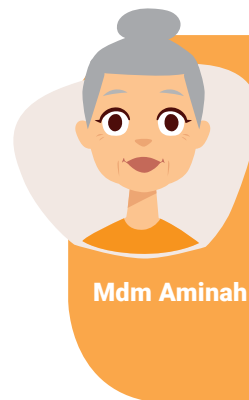


ACCESS COMMUNITY CARE SERVICES AND FINANCIAL SCHEMES IN SECONDS!

By Agency for Integrated Care

Looking for a comprehensive guide to community care services and financial schemes? You can now tap into the Agency for Integrated Care's (AIC) free smartphone applications, **AICare Link** and **Mobile E-care Locator (MEL)** to help your patients with all their care needs.

Read on to find out how you can help patients like Mdm Aminah find suitable services and assistance. Download both apps at <http://onelink.to/aicarelinkapp> and <http://onelink.to/melapp>, then follow our step-by-step guide below:



Mdm Aminah

- 66-year-old Singaporean
- Lives in a flat in Ang Mo Kio
- Has one child who works full time (annual income of \$30,000)
- Needs help with showering and walking
- Needs alternative caregiver such as a Foreign Domestic Worker
- Needs a day care centre

AICare Link (For Financial Assistance Schemes)



1

Use Mdm Aminah's info to answer the questions on patients' demographics, activities of daily living, and household income



2

Click "Find Scheme"



3

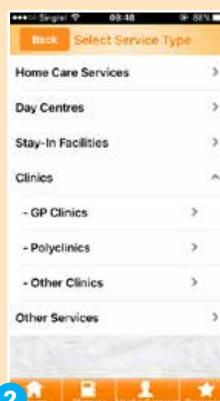
App shows the most appropriate schemes for your patient

Mobile E-care Locator (For Community Care Services)



1

Launch the MEL app



2

Select Service Type based on patients needs, e.g. Day Care Centre for Mdm Aminah



3

App shows the nearest service providers for your patient

Besides helping your patients navigate the community care services and financial assistance schemes, the apps also share ways to apply for the recommended schemes and how to contact service providers. For more information, please visit the Singapore Silver Pages website at www.silverpages.sg or contact us at gp@aic.sg or **6632 1222**.



A milestone Primary Care event is coming your way on **9th July 2016!** Stay tuned to Primary Care Pages (<https://www.primarycarepages.sg>) for the latest updates on this event.

