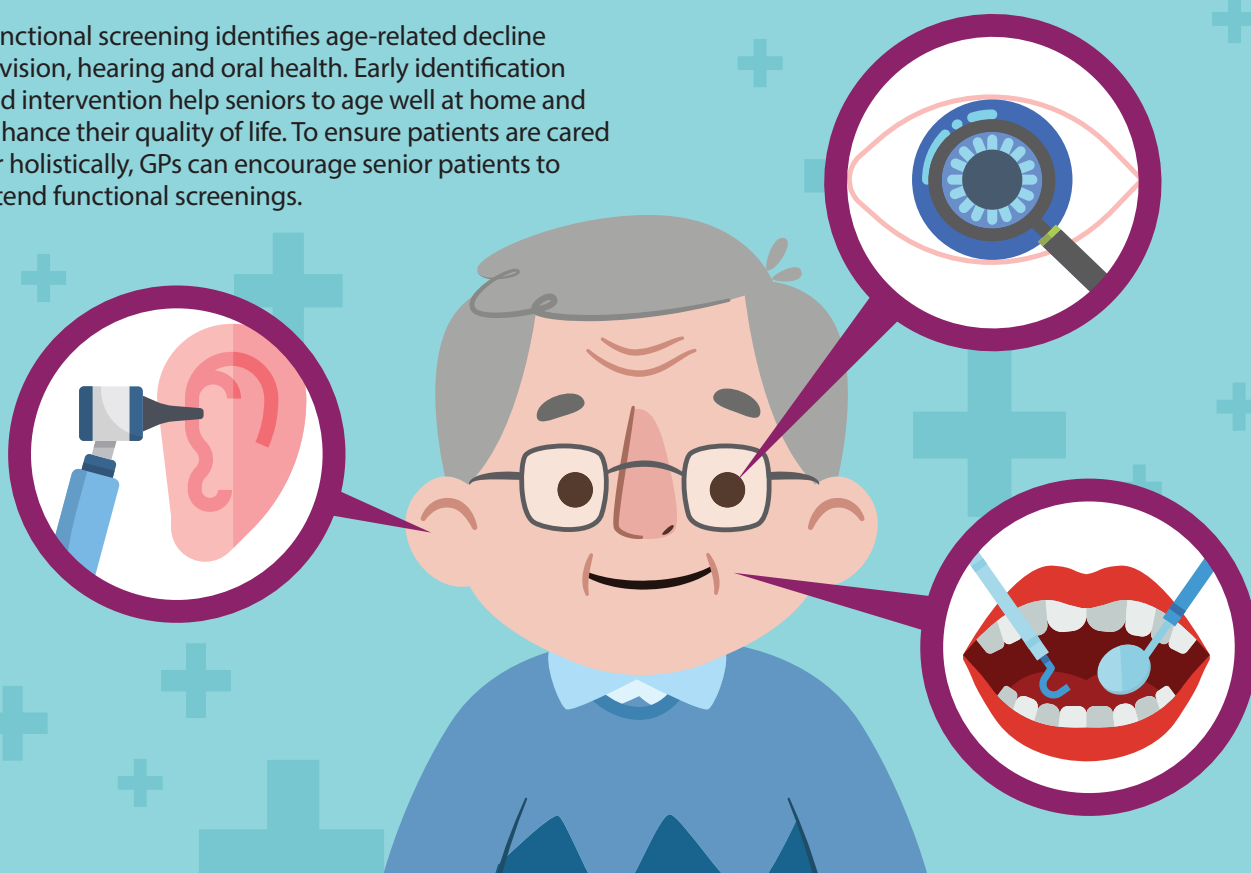


HELPING SENIORS AGE WELL WITH FUNCTIONAL SCREENING

By Agency for Integrated Care

Functional screening identifies age-related decline in vision, hearing and oral health. Early identification and intervention help seniors to age well at home and enhance their quality of life. To ensure patients are cared for holistically, GPs can encourage senior patients to attend functional screenings.



PROJECT SILVER SCREEN (PSS)

In January 2018, the Ministry of Health (MOH) and the Health Promotion Board (HPB) rolled out "Project Silver Screen (PSS)", a national functional screening programme for seniors, with the aim of screening 45,000 seniors aged 60 years and above annually over the next five years.

The Community Networks for Seniors (CNS), People's Association (PA) and the Silver Generation Office in the Agency for Integrated Care (AIC) provide active support in close co-operation with MOH and HPB, and have helped over 40,000 seniors attend functional screening, supported by PSS since January 2018.

PSS supports basic functional screening for hearing, vision and oral health at subsidised rates for all citizens above 60 years old. It is non-chargeable for Pioneer Generation Citizens, S\$2 for CHAS card holders, and S\$5 for all other citizens.

Depending on the results of a functional screening, seniors may be referred to the relevant community or medical centres for further evaluation. With effect from

3 July (for Ophthalmology SOC) and 20 November 2018 (for Ear, Nose & Throat (ENT) SOC), PSS participants who are Singapore Citizens and Permanent Residents (PRs), will be eligible for subsidies at Specialist Outpatient Clinics (SOCs) based on the prevailing SOC subsidy framework when referred to a public hospital's Ophthalmology and ENT SOC under PSS.

As part of the Senior's Mobility and Enabling Fund, seniors who require spectacles will receive PSS vouchers at PSS functional screenings. Seniors diagnosed to need other assistive devices such as dentures and hearing aids will also receive PSS vouchers after further post-PSS evaluation.

Seniors who wish to attend functional screening may refer to the latest PSS schedule online and walk-in at their preferred screening session for registration. If you have a patient who needs assistance with attending a screening, please leave their contact details via the Singapore Silver Line and AIC will arrange for someone to assist them.